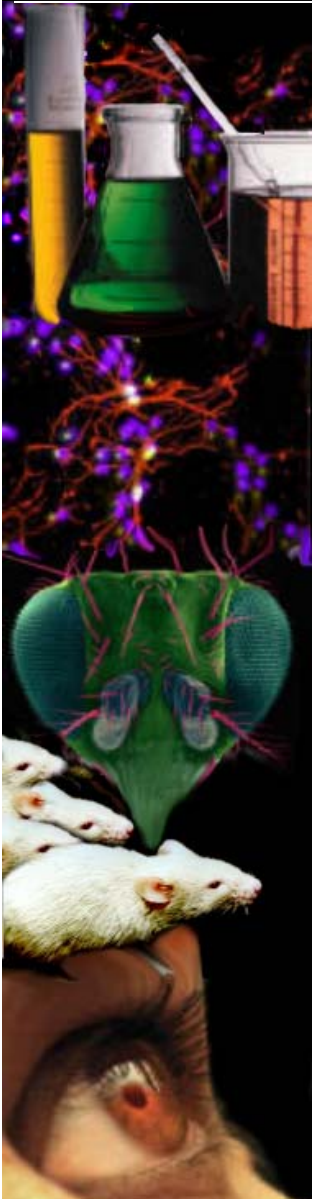
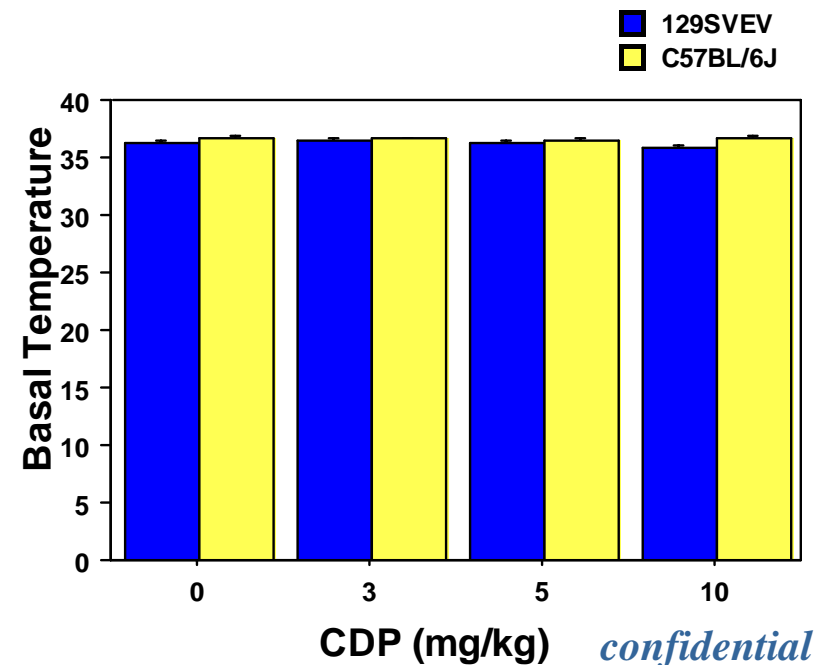
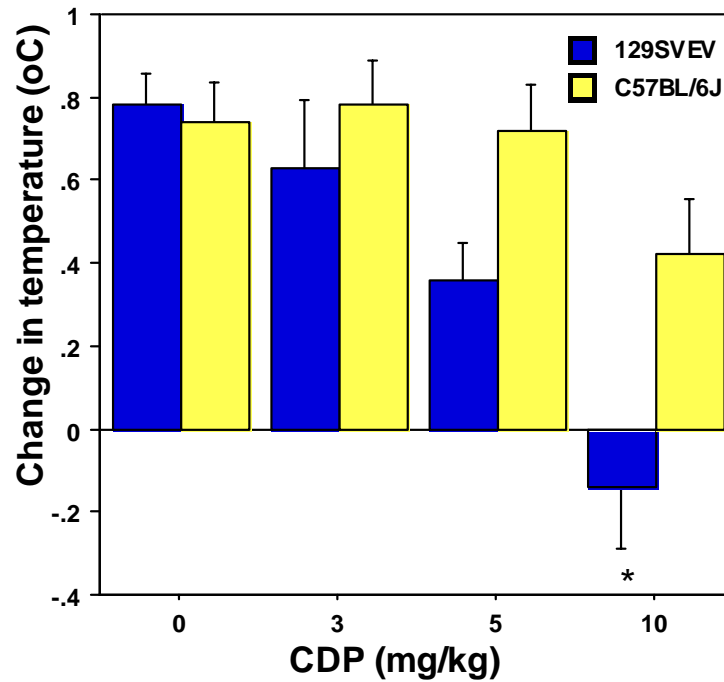


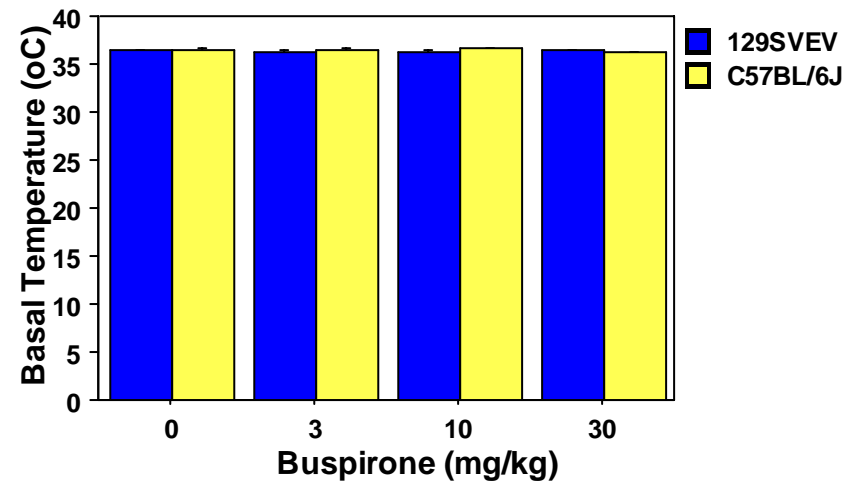
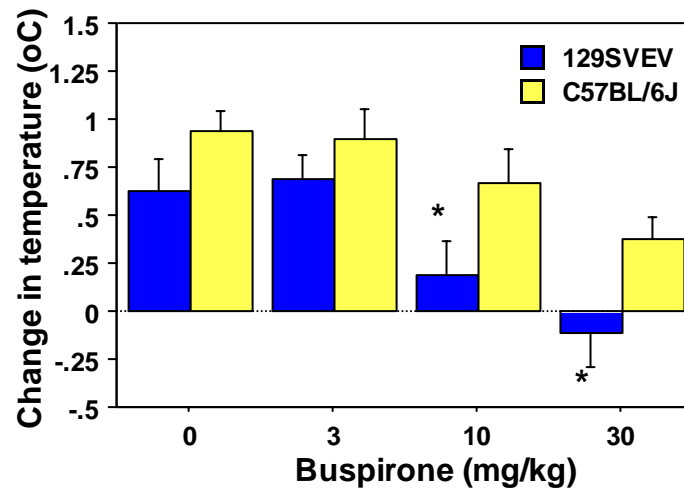
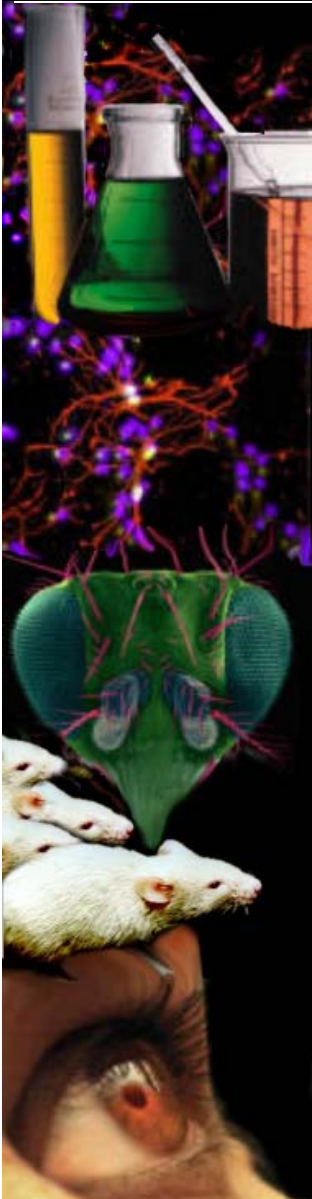
Behavior Paradigms for Anxiety

Stress-Induced Hyperthermia (SIH)

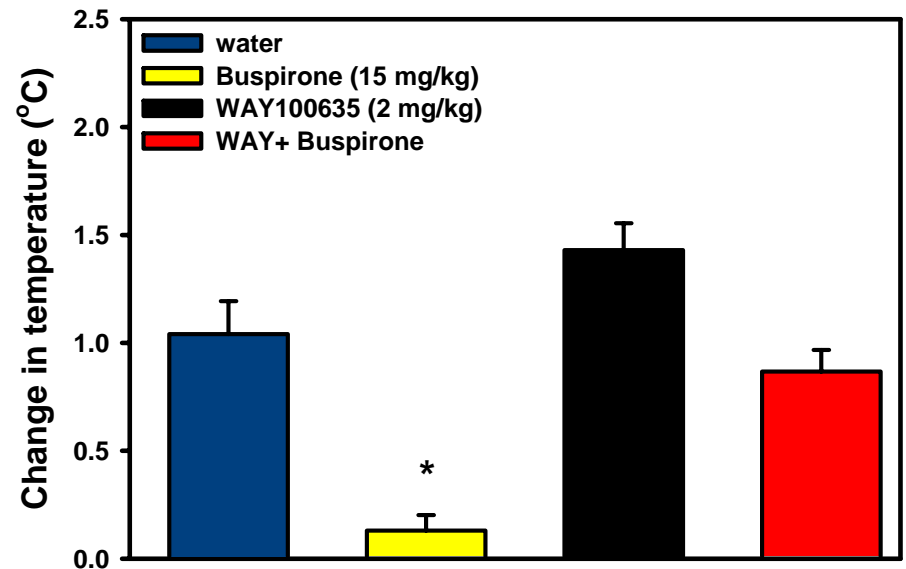
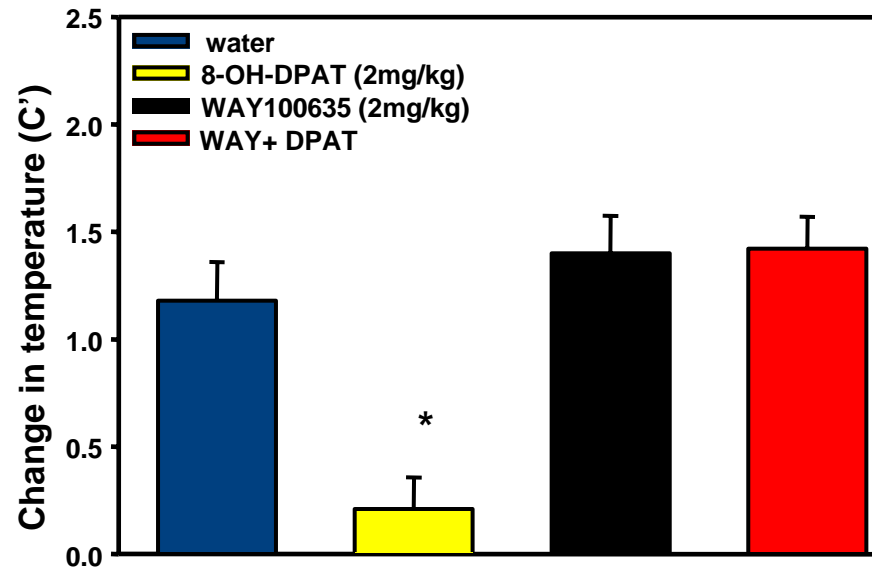
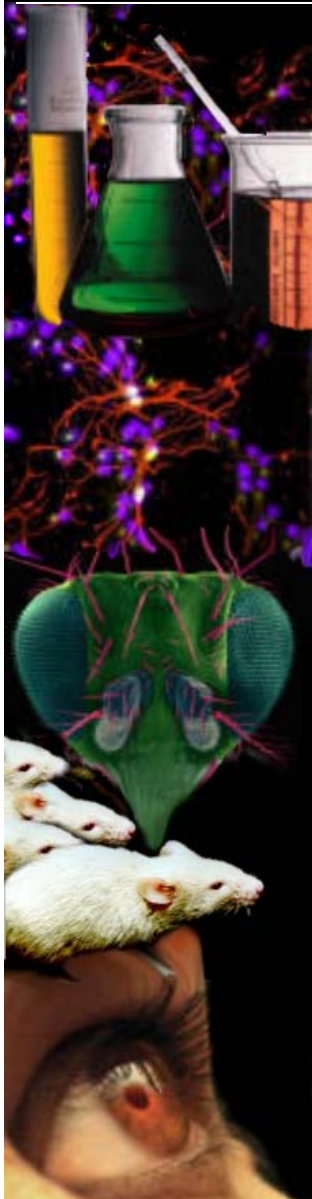
SIH demonstrates that a stressor will increase body temperature which is reduced with anxiolytic drugs. 129SVEV mice are a good model for this test.



The effect of 5-HT_{1A} agonists on SIH

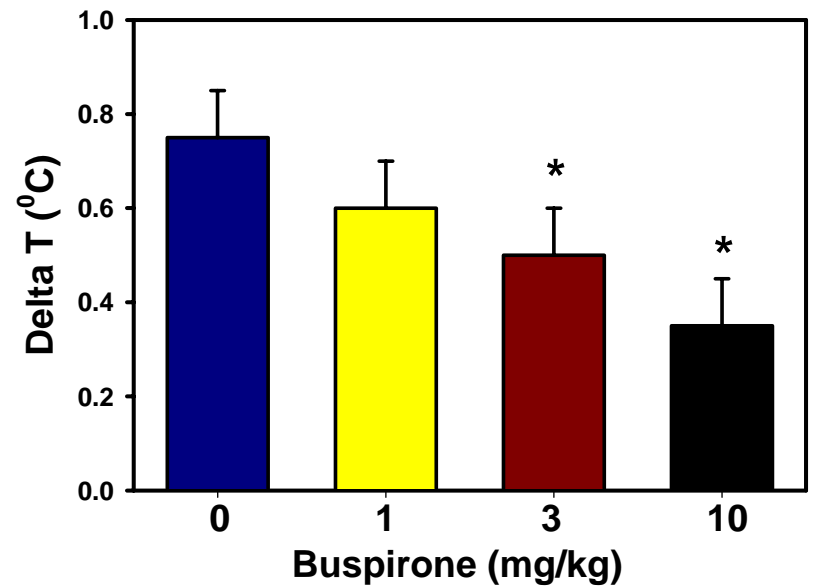
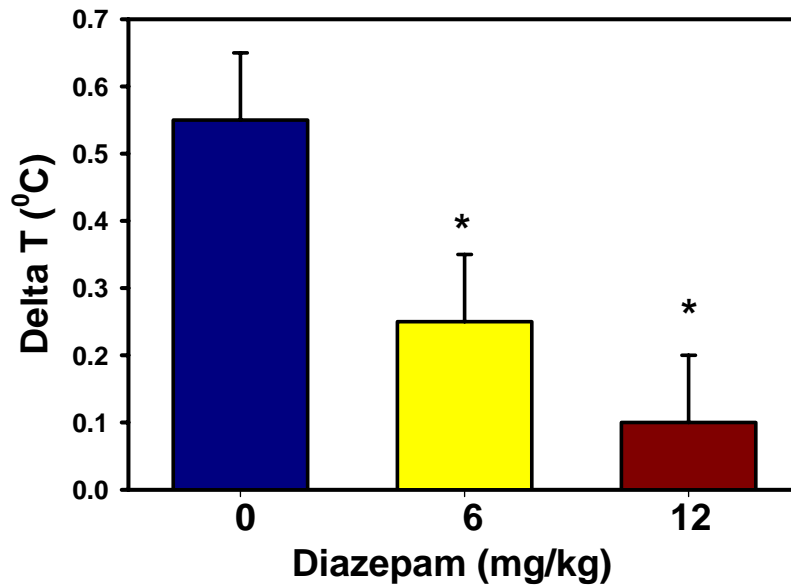
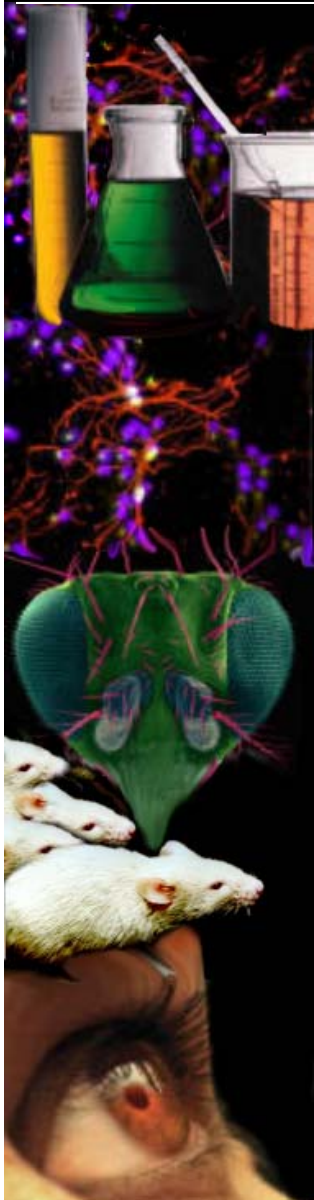


The reversal of the effects of 5-HT_{1A} agonists on SIH



confidential

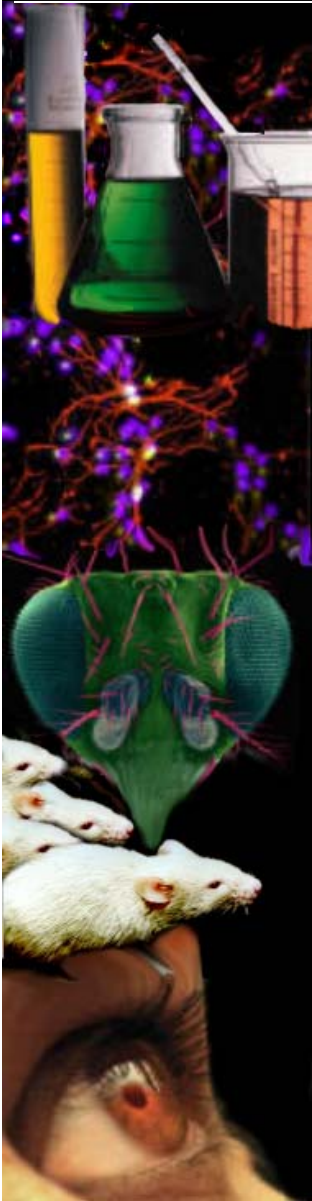
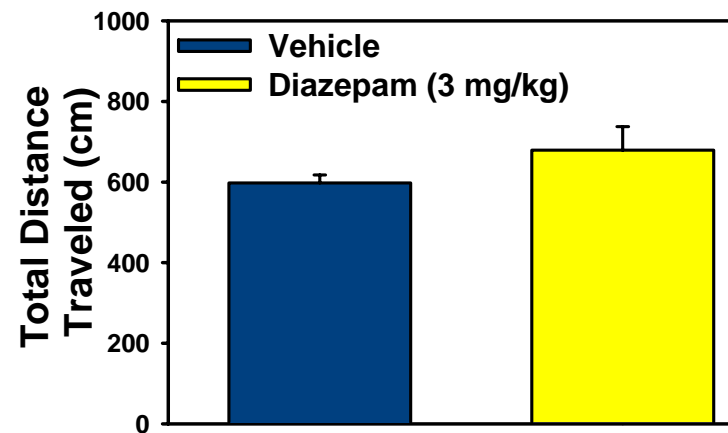
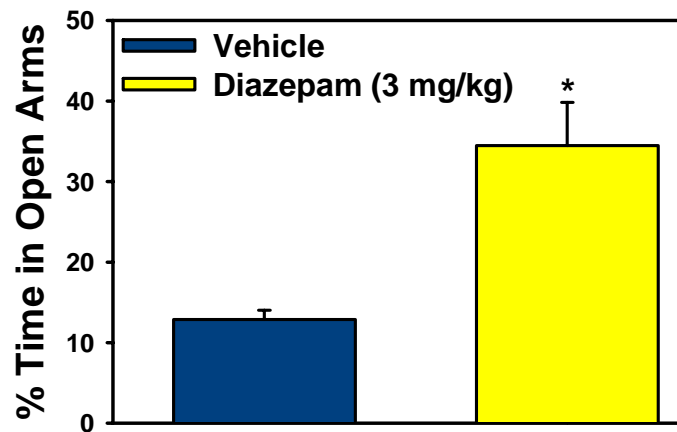
Effect of buspirone and diazepam on SIH in wistar rats



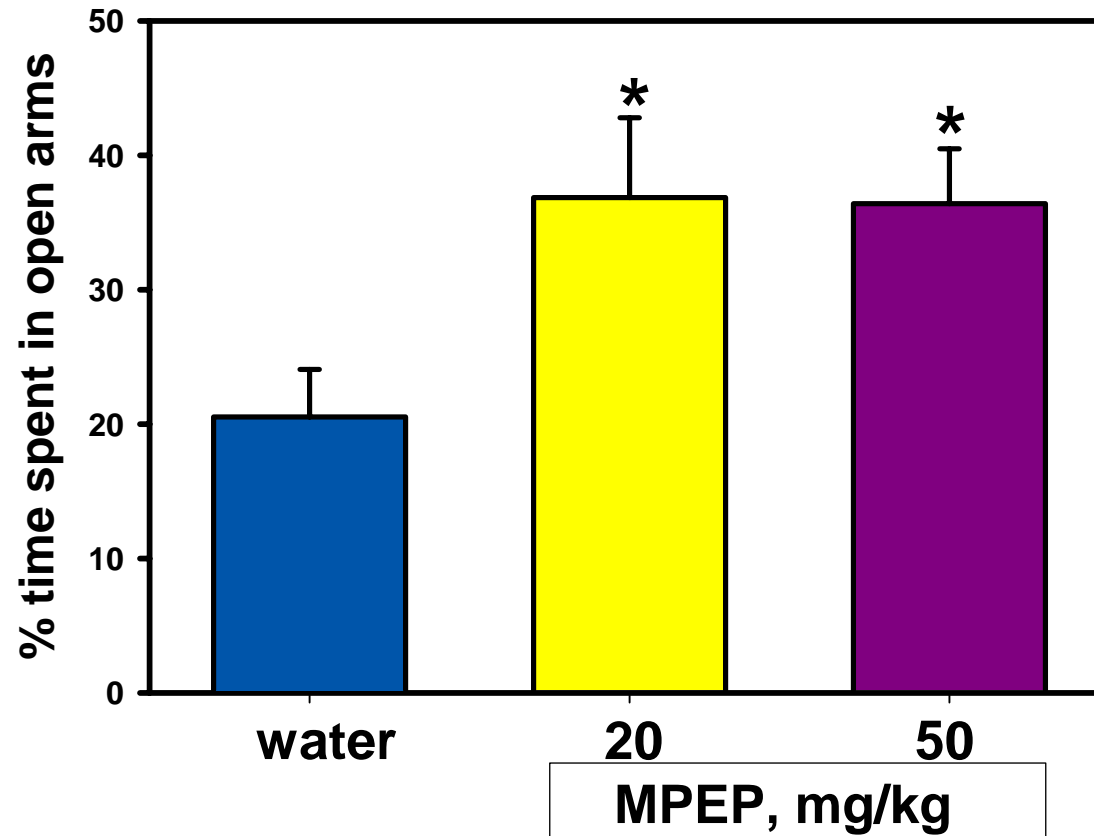
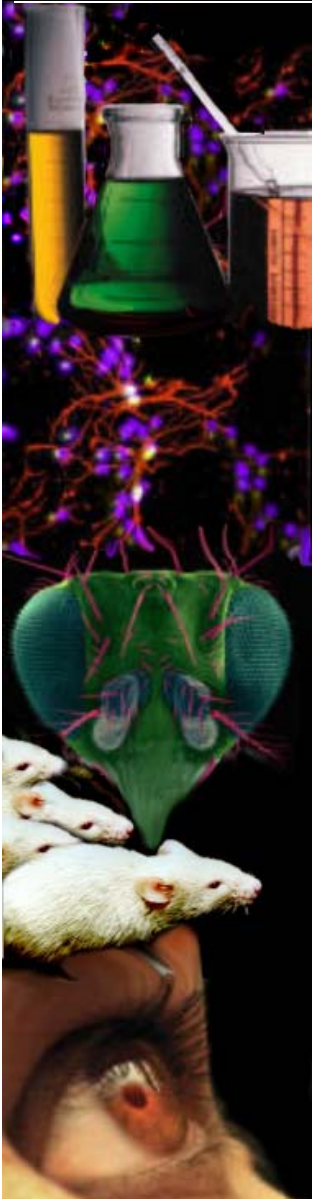
confidential

Elevated Plus Maze (EPM)

EPM measures a rodent's aversion to open spaces. Anxiolytic agents will increase the time spent in the open arms of the maze.

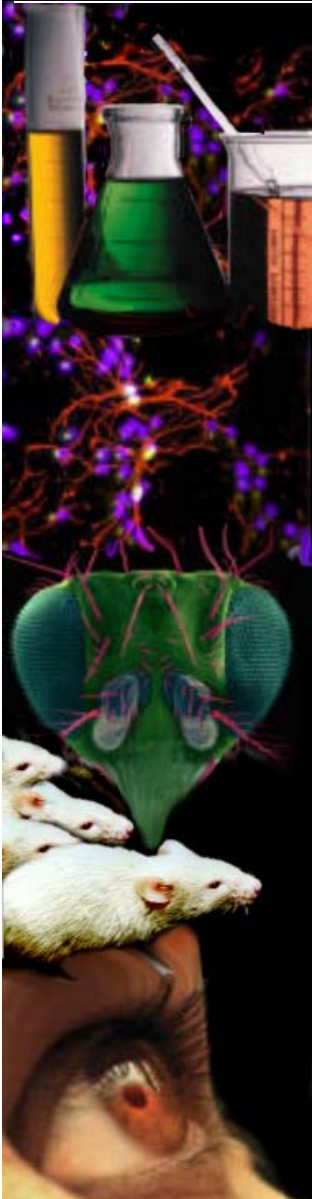
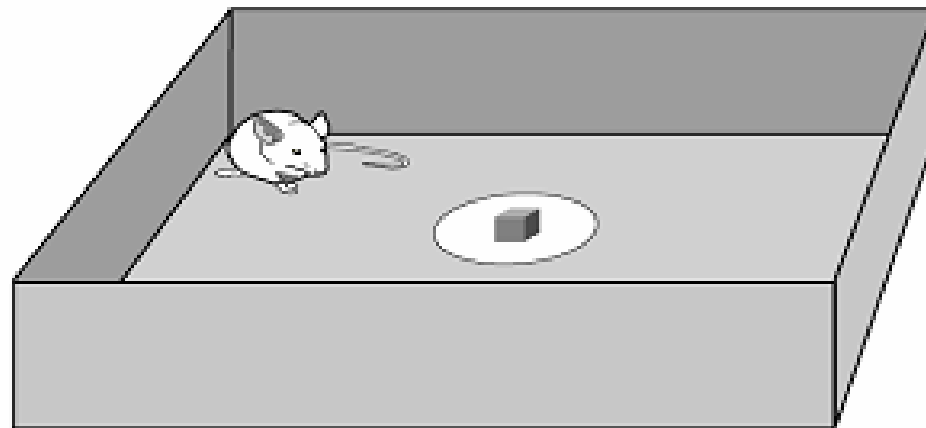


The mGluR antagonist MPEP increases time spent in the open arm of the EPM



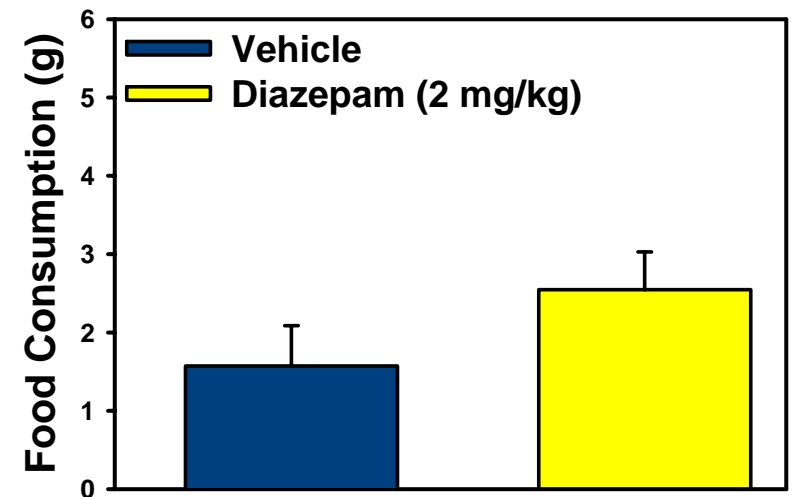
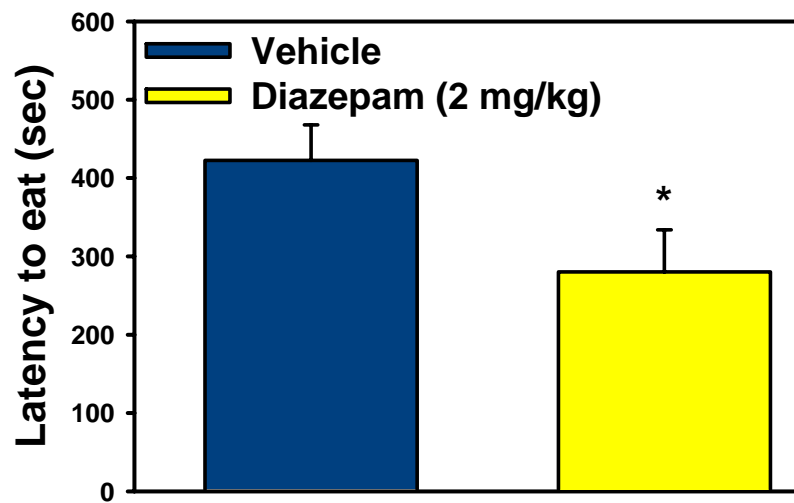
Novelty Suppressed Feeding

NSF measures a rodent's aversion to eating in a novel environment. Chronic administration of antidepressants will decrease the latency to eat.



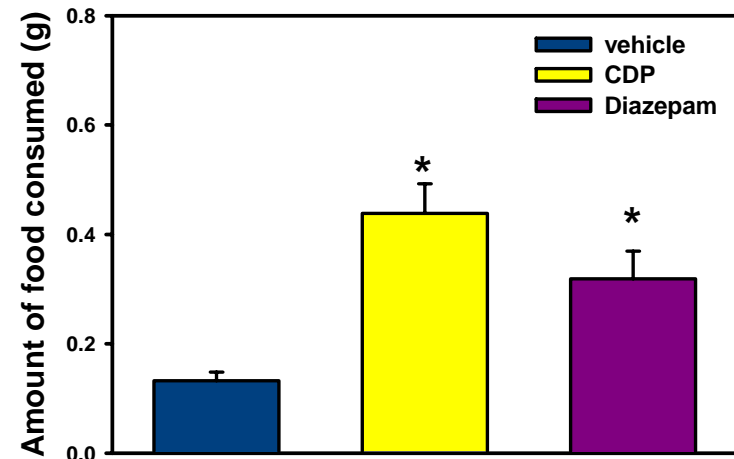
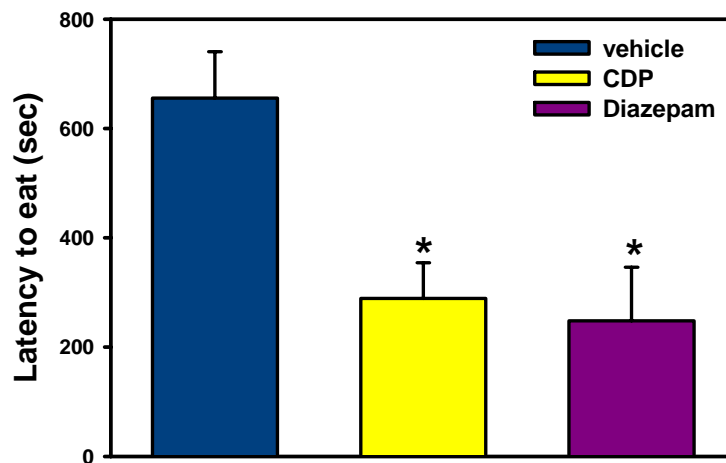
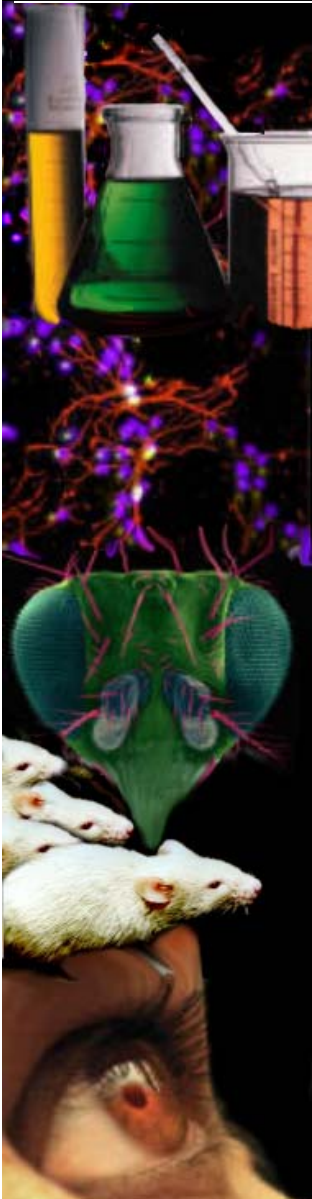
Novelty-Suppressed Feeding (NSF)

NSF measures a rodent's aversion to eating in a novel environment. Anxiety is measured by an increase in the latency to eat. Acute administration of diazepam will decrease the latency to eat.

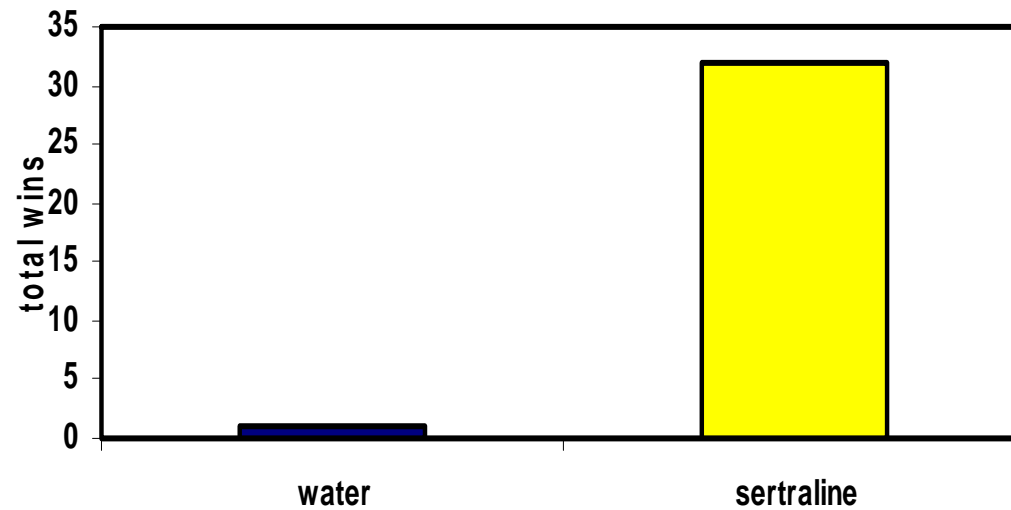
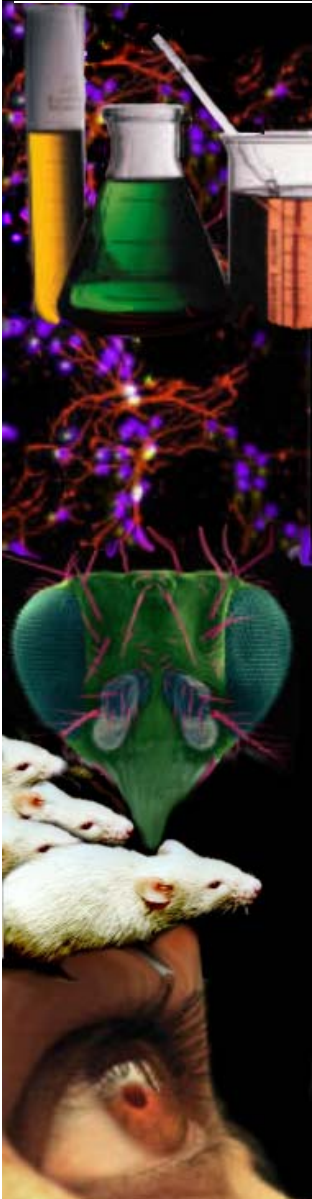


Novelty-Induced Hypophagia

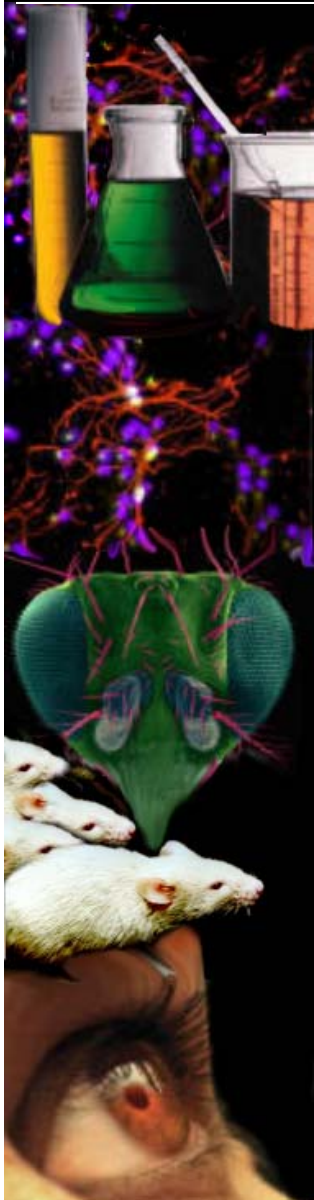
Acute injection of either CDP or Diazepam decrease latency to eat and increase food consumption in a novel environment.



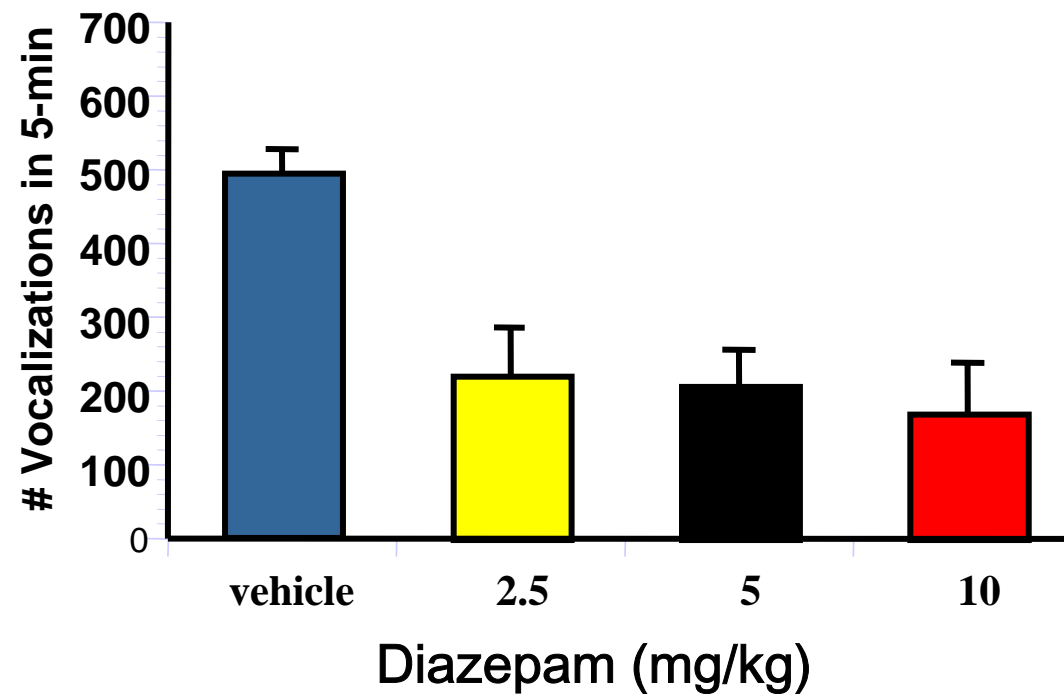
Sertaline increases social dominance in the tube test



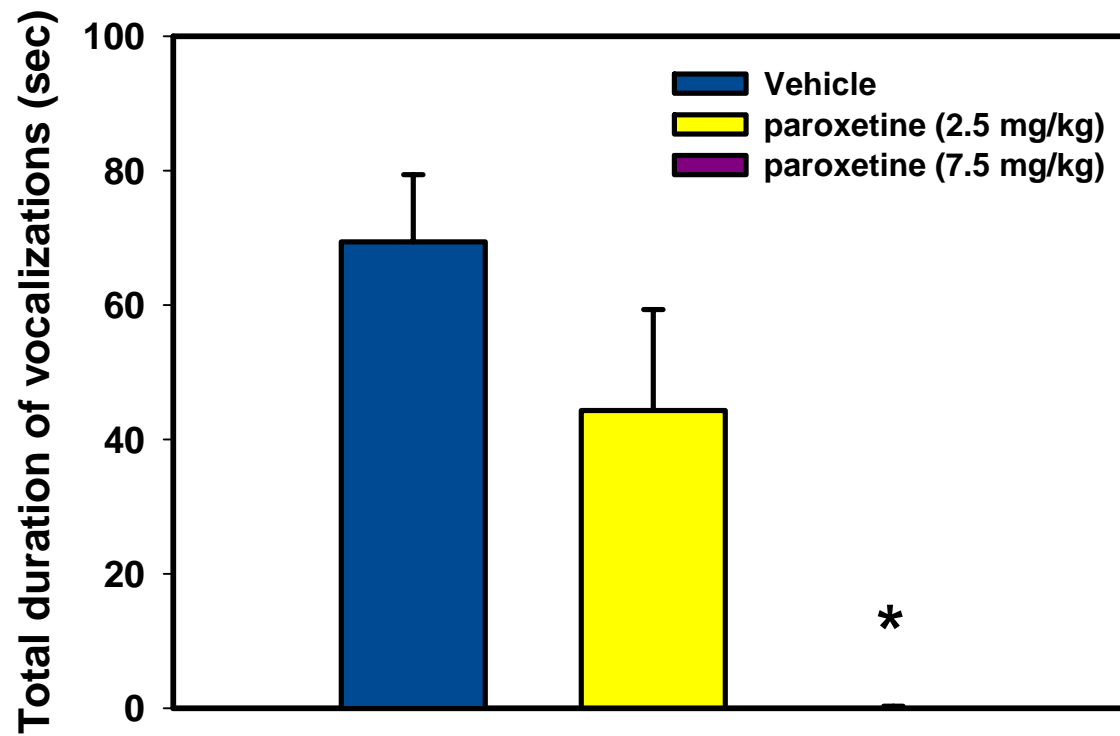
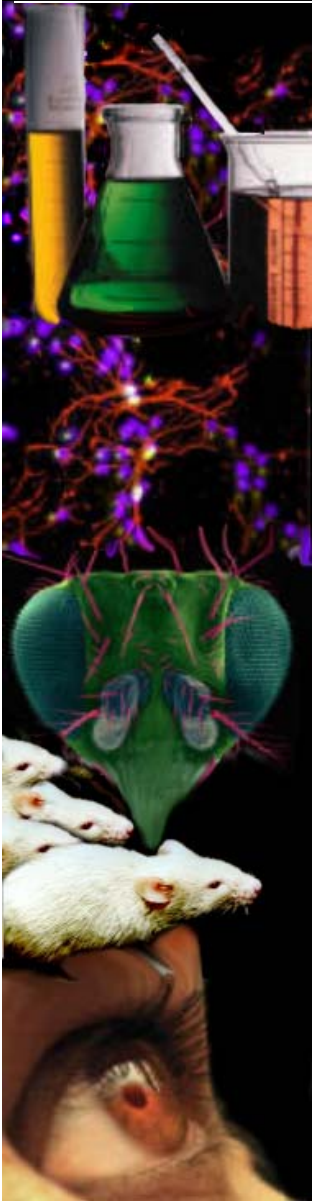
Guinea Pig Pup Vocalization



A test that measures distress vocalizations of guinea pig pups and is sensitive to anxiolytic drugs like benzodiazepines.



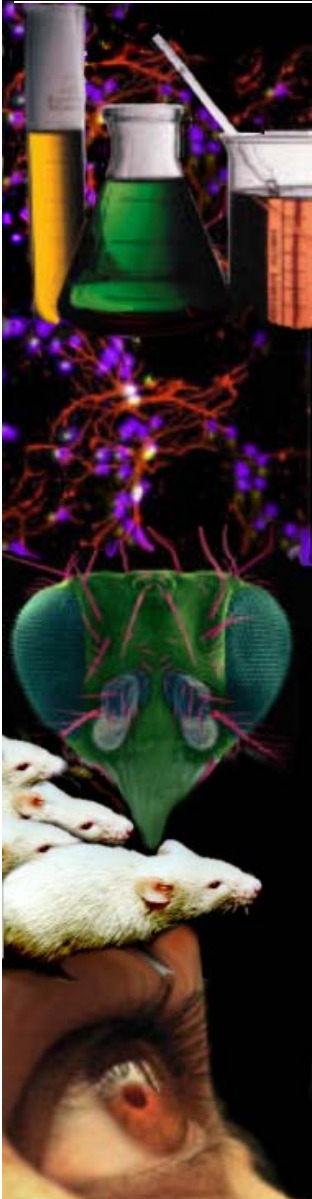
Paroxetine decreases the duration of guinea pig pup vocalization



Marble Burying

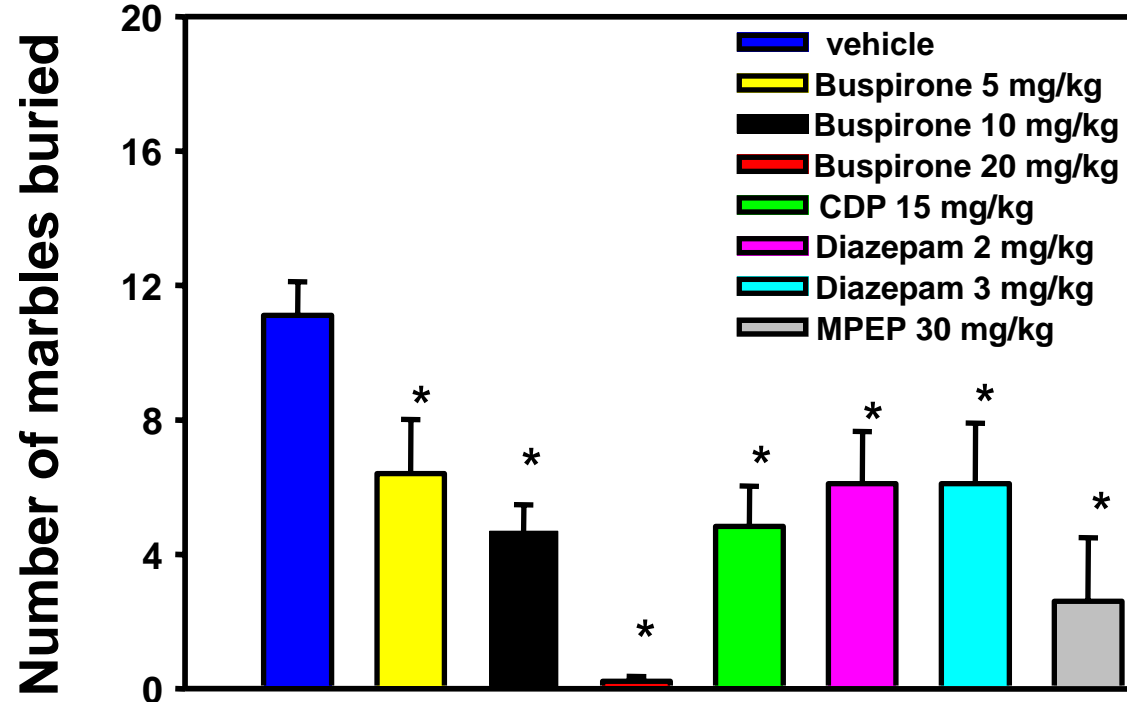
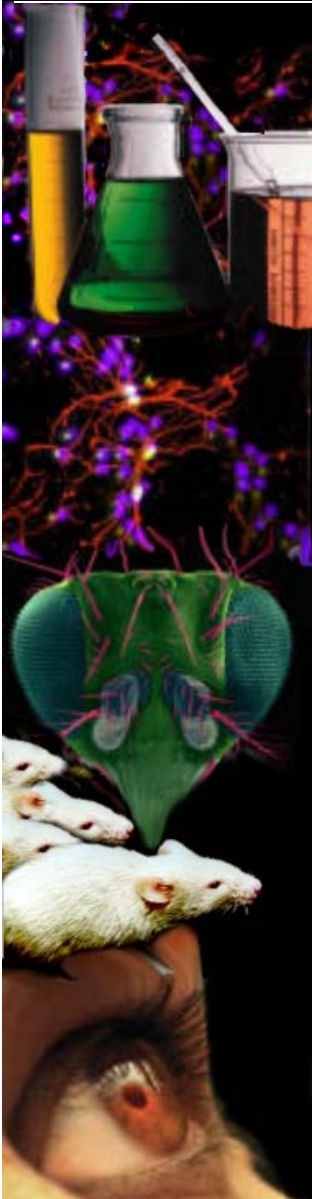
Marble burying is used as a model of anxiety / obsessive compulsive disorder. When exposed to marbles, mice tend to bury them.

Anxiolytic agents will decrease marble burying.



Marble Burying

Marble burying is used as a model of anxiety / obsessive compulsive disorder. When exposed to marbles, mice tend to bury them. Anxiolytic agents will decrease marble burying.



The reversal of the effect of 5-HT_{1A} agonist on marble burying

